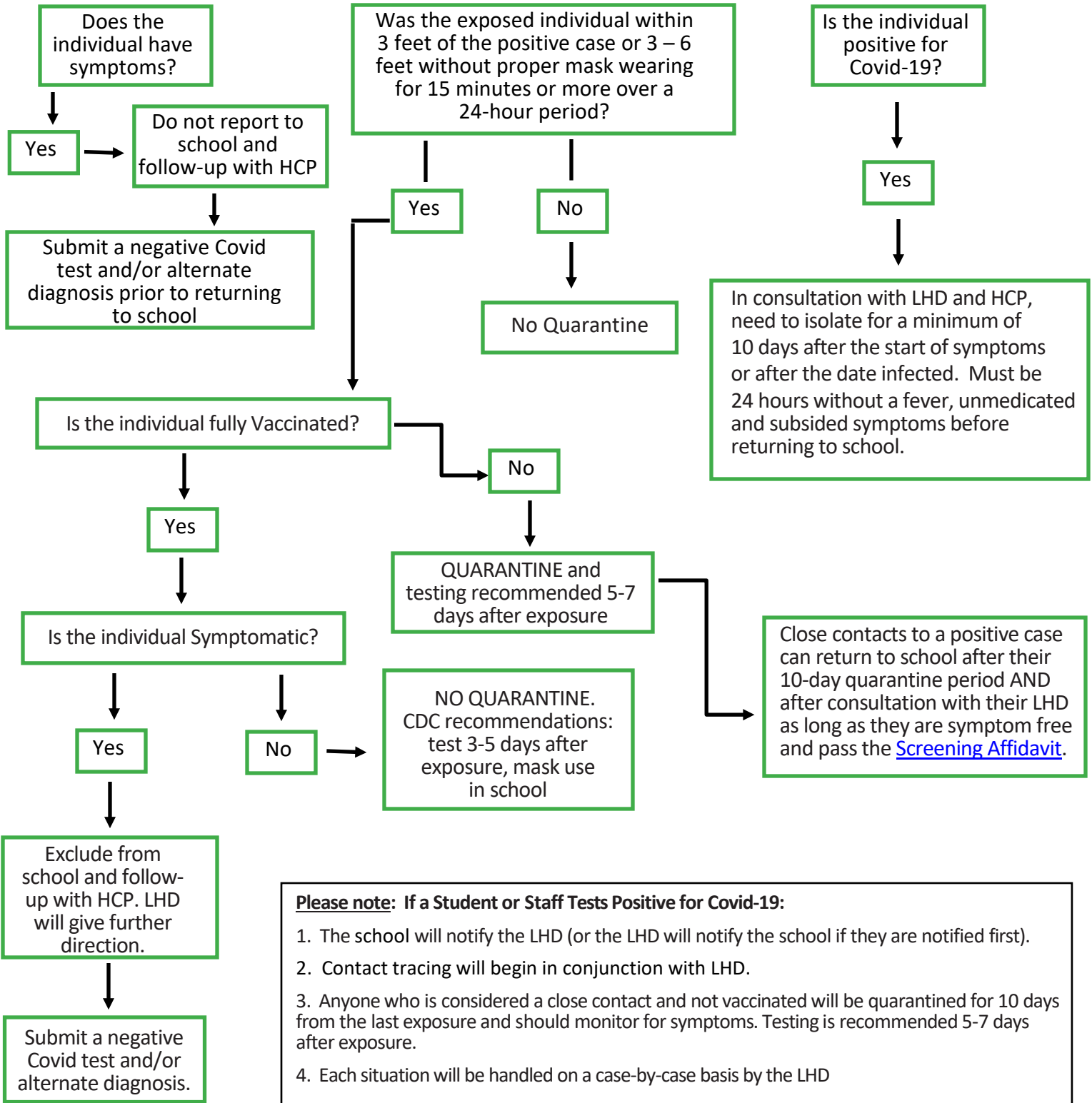


# PROTOCOL FOR SYMPTOMATIC OR POSITIVE COVID-19 OR EXPOSED STUDENT

**\*\* Please refer to the [Screening Affidavit](#) each day prior to coming to school.**



**Please note: If a Student or Staff Tests Positive for Covid-19:**

1. The school will notify the LHD (or the LHD will notify the school if they are notified first).
2. Contact tracing will begin in conjunction with LHD.
3. Anyone who is considered a close contact and not vaccinated will be quarantined for 10 days from the last exposure and should monitor for symptoms. Testing is recommended 5-7 days after exposure.
4. Each situation will be handled on a case-by-case basis by the LHD

**LHD – Local Health Department  
HCP – Health Care Provider**